



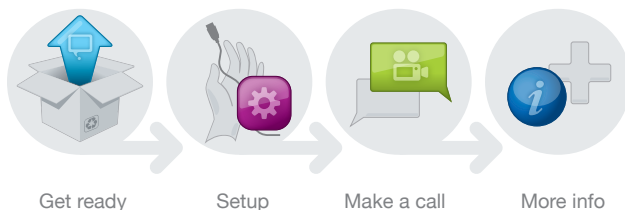
Quick Start Guide

Section 1

Welcome to telyHD

telyHD brings Skype video calling to your living room in stunning high definition. Get ready to connect with family, friends and business colleagues like never before!

This guide is divided into the following 4 sections:



What's in the box?



Technical Support – online self service

For helpful tips and how-to videos, visit our dedicated support web site.

Web tely.com/support

Technical Support – live agent

You can also reach us directly Monday through Friday, 9am to 5pm Pacific time.

Email support@tely.com

Toll free 1 (888) 787-TELY (8359)

Direct 1 (650) 318-6866

Chat tely.com

If you need help as you're setting up your telyHD, please visit the help section of our website at tely.com/support where you will find related tips, helpful videos, and a troubleshooting guide.

Before we begin

To use telyHD, you'll need the following four things:

1



Skype account

If you don't already have one, setting up an account is quick, easy and free. You can do this either on your computer or as part of the telyHD setup process.

To setup a new account on a computer, please visit <http://login.skype.com>

2



Network connection

For the highest quality experience, connect your telyHD unit directly to your network using an Ethernet cable.

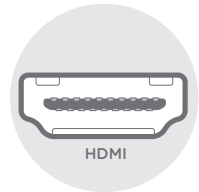
You can also connect via a Wi-Fi network. To do this, you'll need to have your Wi-Fi network name (SSID) and password.

3



TV with an HDMI port

You'll need an open HDMI port on either your TV or your AV receiver. The port will look like this:



4



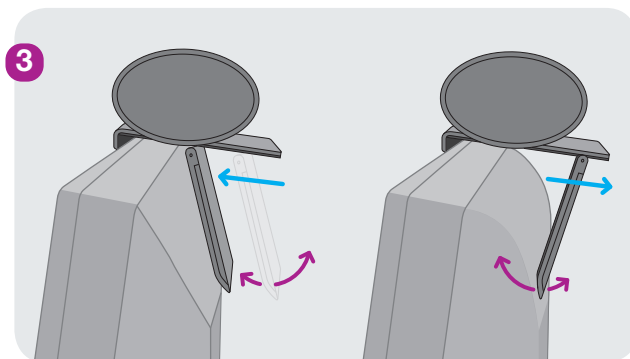
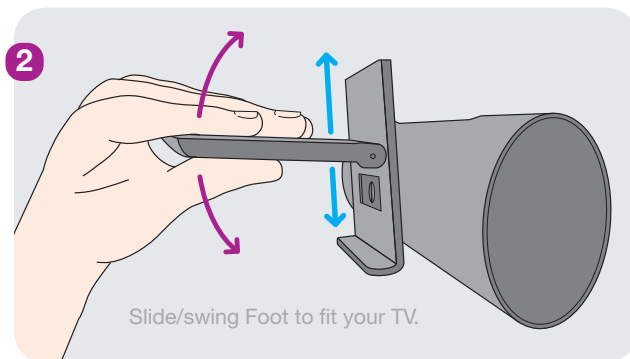
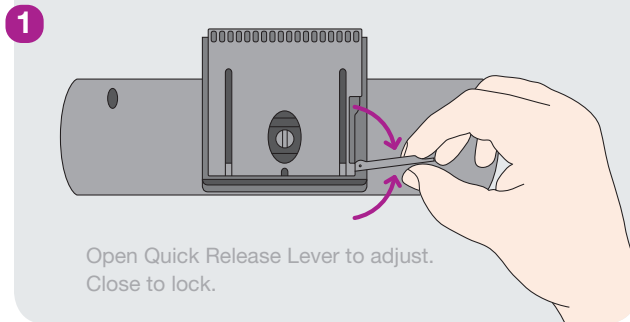
Broadband connection

For HD video, your telyHD requires a minimum of 1Mbps of upstream/downstream speed. However, telyHD will dynamically adjust to lower speeds. To check the speed of your connection and for more information, see page 10.

Section 2

Position your telyHD

Adjusting the TV Clamp



We know everyone's home is a little different, so we've provided three different options to position your telyHD. Option A (below) will provide the best experience.

A On top of your TV (recommended)

Open the Quick Release Lever to adjust the TV Clamp. Slide and angle the Foot to accommodate the width and profile of your TV. Close the Quick Release Lever to secure telyHD on top of your TV.

 Always open the Quick Release Lever before sliding or changing the angle of the Foot.



Alternative positions

B Place on a shelf

Optionally, you may position telyHD next to your TV. The goal is to place telyHD in a way that allows for natural face-to-face video calling. See also [Helpful hints](#) to the right.



C Use a tripod

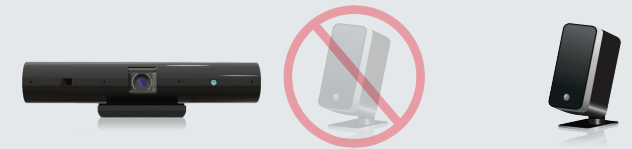
You can also mount telyHD to any standard camera tripod (not included). Simply unscrew and remove the TV Clamp from your telyHD. Then screw the tripod into telyHD just like you would a camera.



Helpful hints

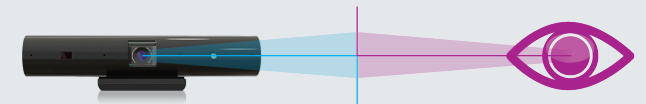
Place telyHD away from speakers

Placing your telyHD close to your TV or AV system's speakers may cause feedback or distortion, especially for the remote party.



Optimal placement

The goal is to provide a “face-to-face” experience where you can look at the telyHD camera and TV at the same time.



Good lighting is key

Let them see your smile! Cameras need light to work well, and your telyHD is no exception. Make sure that your face is well lit to create a better experience for your friends.

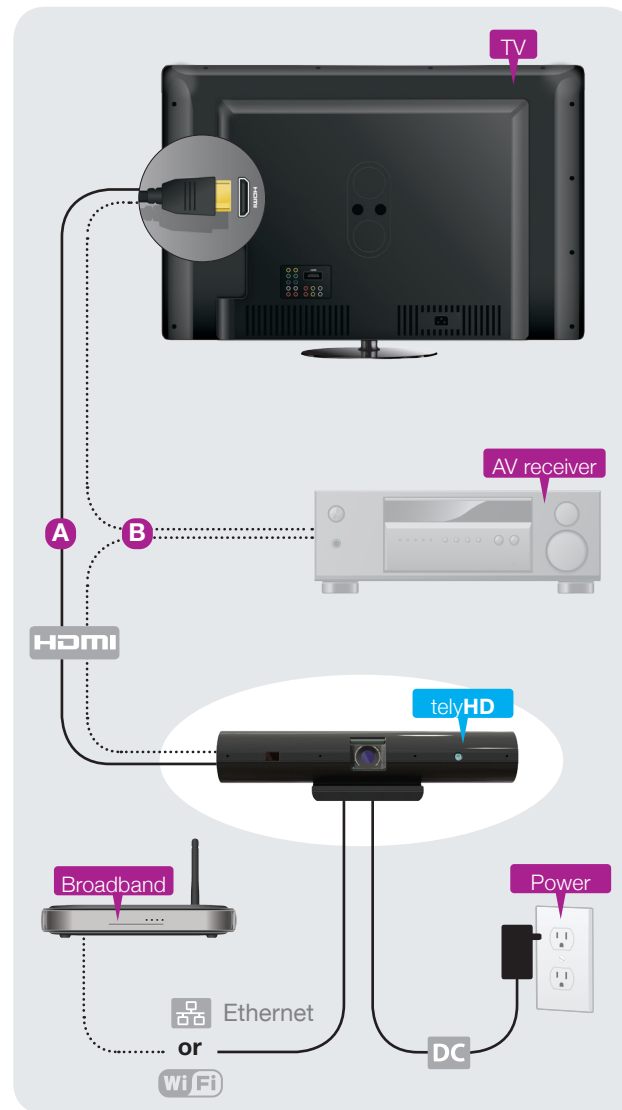
Plugging in your telyHD

1 Connect to the TV or AV receiver

First, plug the smaller end of the HDMI cable into the port labeled **HDMI** on your telyHD.

Next plug the larger end of the HDMI cable into an open HDMI (IN) port on either your **A** TV or your **B** AV receiver as shown at right.

If in doubt, plug the HDMI cable directly into your TV as shown in option **A**.



2 Connect to the Internet

Wired: (recommended)

Connect one end of an Ethernet cable (not included) directly to your router and plug the other end of the cable into the Ethernet port labeled **Ethernet** on your telyHD.

Wi-Fi: (alternate)

If you want to connect via Wi-Fi, skip this step for now. You will be able to configure your Wi-Fi settings later in the process.

3 Connect to power

Plug the included power adapter into a power outlet, and plug the other end into the **DC** power port on your telyHD. This will automatically start your telyHD.

⚠ International Use: Your telyHD's power adapter will work worldwide and can accommodate from 110 to 240 volt. If you are outside the USA, you may need a plug adapter to fit into the power outlet used in your country.

Guided Setup

Note: For the remainder of the setup process you'll need your telyHD remote. After a few moments you should see a screen similar to the following:



Follow the onscreen instructions to configure your telyHD.

Connect via Wi-Fi

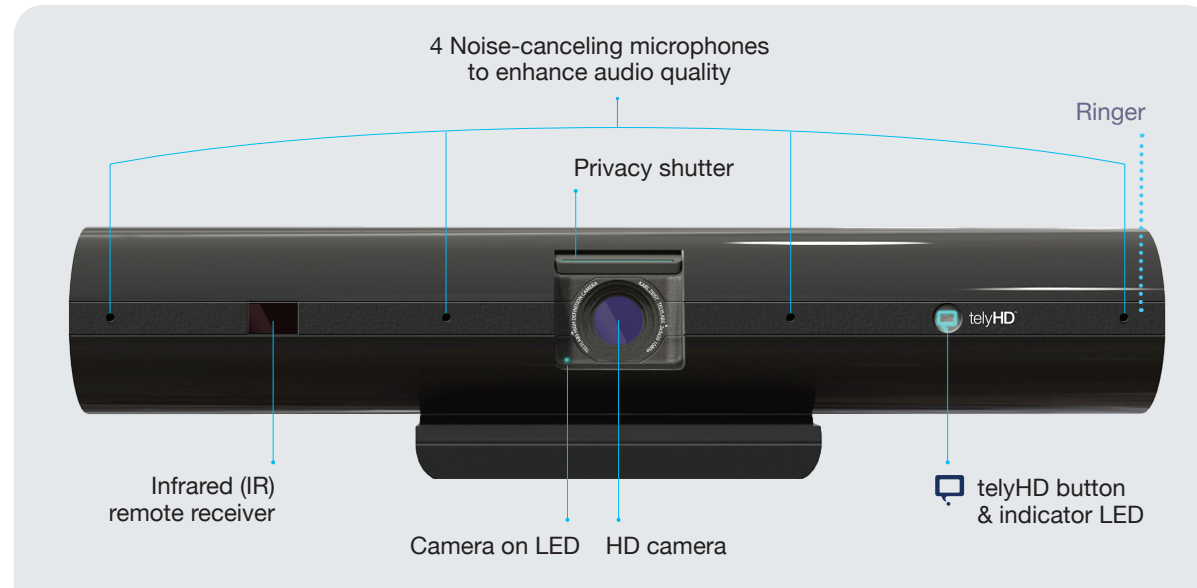
If you did not connect your telyHD using an Ethernet cable, follow the instructions in Guided Setup to add telyHD to your home Wi-Fi network.

For more information on how to use your remote, flip open this flap.

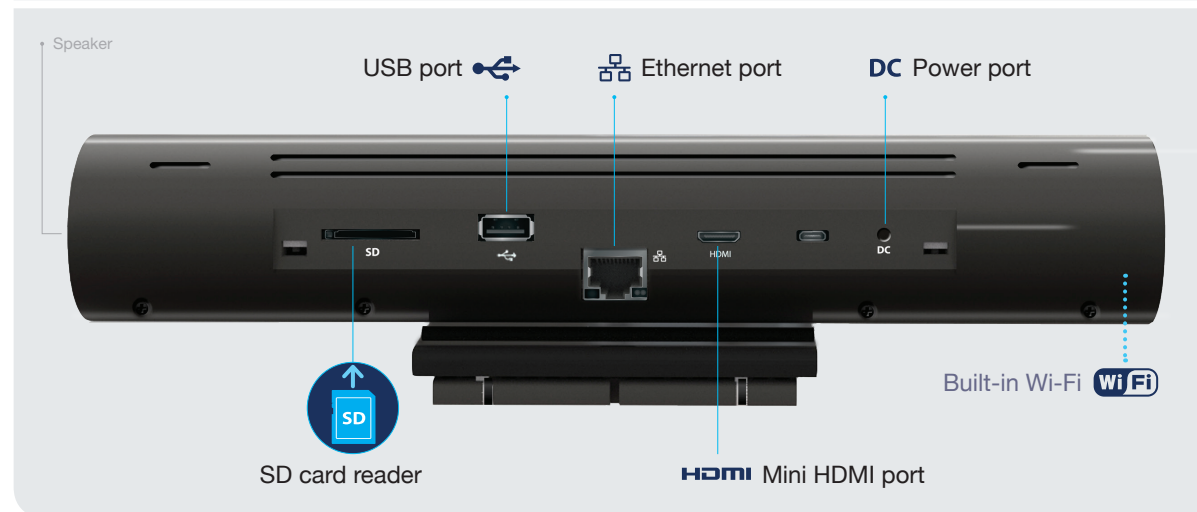


telyHD

Front view



Back view



4 Change the Input/Source on your TV

To use telyHD, you will need to switch your TV or AV receiver's input to match the HDMI input used by your telyHD in the previous step.



Examples may not match your remote.

To change inputs, look for the Input/Source button on your TV remote or AV receiver. Press this button to cycle through the inputs until you get to the HDMI input used by telyHD. You may need to wait a couple of seconds between each button press to allow your TV to adjust.

You should now see the telyHD logo or the Welcome Screen for the Guided Setup on your TV.

Note: To return to watching TV, repeat the same process described above. Cycle through the Input or Source settings until you reach the correct one.

Section 3

Skype and telyHD

You need a Skype account to use telyHD. You can either sign in to an existing Skype account or create a new account. It's easy to add and manage multiple accounts on your telyHD.

For the initial set up, we recommend signing in with your current Skype account if you have one. Using this method will give you instant access to your existing contacts.


Home Screen

The Home screen shows all of your Skype contacts and their Skype status. You can choose which Contacts appear on the home screen in the Directory.


Adding a contact

If needed, select the “Add...” card in the Directory, then enter a full or partial Skype Name to search. You may also search by name, and/or email address. Once you find the person, invite them to be added to your contacts. Typically, they will need to accept your invitation before you can call them.

Calling a contact

Use the ◀ ▶ buttons on your telyHD remote to browse your contacts. Select an  online contact and press the select button ● to call.

The Menu Bar


Select the  button on your telyHD remote to view the Menu Bar. Use the ◀ ▶ buttons on your telyHD remote to view the different menu options.

Selection button

Navigation buttons

Menu button

End call button




PULL OUT

Basic remote functions

The following summarizes the key remote functions.

Contacts Screen	Button actions
Move through the carousel	◀ ▶
Turn over a card for more information	▲
See or hide menu	Menu
Place calls or select the highlighted option	●

In-Call Screen	Button actions
See or hide menu	Menu
Move through the menu	◀ ▶
Select the highlighted option from the menu	●
End call	



Sign In

To sign in to Skype, select the card titled “Add...” and press the ● button on your telyHD remote.

Sign Up

Create Skype account: Select the button titled “Create New Skype Account” and press the ● button on your telyHD remote. You will need to create a unique Skype Name.



Using and buying Skype Credit (optional) Skype Credit is needed to call traditional landlines, mobiles, and to use other Skype Premium Services. To buy Skype Credit, visit www.skype.com and click on the "Buy Credit" button in the upper right.

Home Screen



Notifications

Occasionally you might see a notification in the bottom left corner of the Home screen. To access, press the **Menu** button on the telyHD remote, then scroll to Messages icon.

Accepting Skype contact requests



You will receive a notification when someone on Skype wants to add you as a contact. Simply follow the steps above to access the Menu Bar and press the **Menu** button to view the request.



No emergency calls with Skype™ or telyHD™
Skype is not a replacement for your ordinary telephone. Please do not use telyHD for emergency calling.

Make your first call


Making a call

Using the telyHD remote, scroll through your contacts and select one that is online. Press the select button  to call. When ready to end the call, press the end call button  on the remote control or select it on the In-call Menu.


Questions or comments?

We want your telyHD experience to be truly amazing. If you have questions or comments, please visit our website tely.com/support, call our technical support team at 1-888-787-8359, or send us an email at support@tely.com.


In-call Screen




Mute Mic




Audio Only | Resume Video




Zoom




Share Photos




Screen Layout



Touch Tone Pad



Technical Details



End Call

Mute Mic | Unmute Mic

Turns your microphone on and off

Audio Only | Resume Video

Turns your camera on and off

Zoom

Adjusts how you appear on camera; includes pan and tilt when not fully zoomed out

Share Photos

Available only between two telyHDs

Screen Layout

Cycles through the viewing options

Touch Tone Pad


For in-call use

Technical Details

View in-call statistics

End Call

Menu




Call Duration

Section 4

Simple steps to dramatically improve image quality

- Make sure the Privacy shutter is open!
- Add lighting towards the face
- Pause network-intensive applications, such as streaming music, backups, large downloads, or other video, etc.
- Switch your TV to Game Mode*

 *Note: While telyHD is designed to make the best of the incoming video it receives, there are inherent technical limitations from some sources. See images at right.*

* Game Mode

Most TVs have an option called Game Mode. Enabling this mode will generally improve your telyHD experience. Refer to your TV manufacturer's guide for instructions or search tely.com/support.



Low quality



Video from mobile caller on your HDTV



Better quality

480p



Video from PC caller on your HDTV



Best quality

720p HD



Video from telyHD caller on your HDTV

